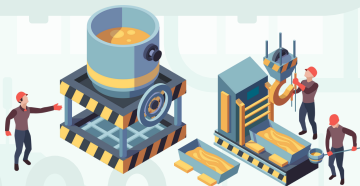


MATERIAL AND MANUFACTURING ENGINEERING

MASTER OF ENGINEERING (M.Eng.)

Admission Requirements

Graduates with a bachelor's degree in Engineering, Science, Technology, Industrial Education, or other related fields as approved by the Program Management Committee.



Application

Thai student apply at: <https://gs.kku.ac.th/>

International student apply at:

<https://interadmission.gs.kku.ac.th/app/>

Application Fee: 700 THB

Requirement:

1. Transcript
2. Portrait Photo
3. English Proficiency Certificate
 - **M.Eng.** : Not require a minimum score.
 - TOEFL (Paper Based), TOEFL (Internet Based), TOEFL (Institutional Testing Program), IELTS (Academic Module), TU-GET, CU-TEP, KCU - AELT

Additional Information

<https://www.en.kku.ac.th/web/>

Facebook : ไท-เอก วิศวกรรมศาสตร์ มข.

Call : 061-0243888

Areas of Research

Biomaterials and Bio-Ceramics:

- Biomaterials
- Calcium Phosphate Bio-Ceramics
- Biomedical Devices
- Healthcare Engineering

Industrial Automation and Control:

- Smart Control for Agriculture/Energy
- Nonlinear Control
- Unmanned Systems
- Advanced Drying Technology
- Instrumentation

Materials and Manufacturing:

- Nanomaterials
- Coatings for Electronics/Automobiles
- Metal Forming
- Heat Treatment
- Composites Processing
- Semi-solid Processing
- Computational Geometry
- Reverse Engineering
- Haptic Aided Design

Graduation Requirement

All types and plans require 1 academic work poster in addition to the following:

M.Eng: Plan A1:

1. 1 TCI-listed or international journal article

Plan A2/B:

1. 1 TCI-listed or international journal article, or
2. 1 conference proceeding publication