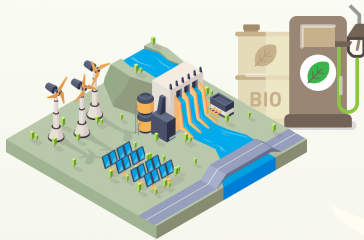


# ENERGY ENGINEERING

**DOCTOR OF PHILOSOPHY (Ph.D.) MASTER OF ENGINEERING (M.Eng.)**

## Admission Requirements

Graduates with a bachelor's degree in Engineering, Science, Technology, Industrial Education, Medicine, Dentistry, Pharmacy, or other related fields as approved by the Program Management Committee.



## Areas of Research

### Energy Conservation and Efficiency :

- Energy conservation and management
- Increasing energy efficiency in generating systems
- Surveying for cost efficiency of energy projects

### Alternative Energy Development :

- Development of alternative energy sources
- Exploring prospects for new energy projects

### Energy Policy and Environmental Impact :

- Policy allocation related to energy
- Accounting for greenhouse gases
- Cost-benefit analysis of energy initiatives

## Additional Information

<https://www.en.kku.ac.th/web/>

Facebook : โท-เอก วิศวกรรมศาสตร์ ขก.

Call : 061-0243888

## Application

**Thai student** apply at: <https://gs.kku.ac.th/>

**International student** apply at:

<https://interadmission.gs.kku.ac.th/app/>

Application Fee: 700 THB

Requirement:

1. Transcript
2. Portrait Photo
3. English Proficiency Certificate

### • Ph.D. :

TOEFL (Paper Based) > 400

TOEFL (Internet Based) > 32

TOEFL (Institutional Testing Program) > 400

IELTS (Academic Module) > 4.0

TU-GET > 400

CU-TEP > 45

KKU – AELT (Reading > 2 and Writing > 2)

- **M.Eng.** : Not require a minimum score.

## Graduation Requirement

All types and plans require 1 academic work poster in addition to the following:

**Ph.D.:** Type 1.1/1.2:

1. 2 SCIE/Scopus articles, or

2. 1 Scopus article + 1 KKU-approved innovation/patent

**Type 2.1/2.2:**

1. 1 SCIE/Scopus article, or

2. 1 international conference proceeding + 1 KKU-approved innovation/patent

**M.Eng: Plan A1:**

1. 1 TCI-listed or international journal article

**Plan A2/B:**

1. 1 TCI-listed or international journal article, or

2. 1 conference proceeding publication